

Thorax - where the legs and wings connect to the body.

Abdomen - contains wax glands and stinger (in females)

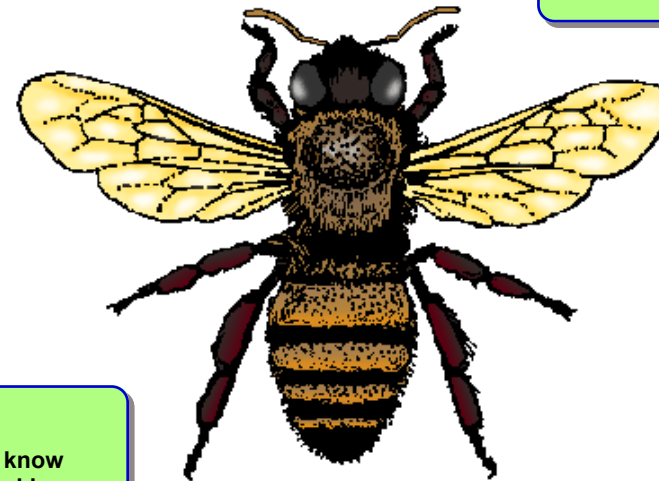
Antennae - sense odor and touch, bees do not have a nose

Mandible - jaws that are plier like.

Legs - 6 hairy legs. The set of rear legs contain a pollen basket to hold the pollen and a pollen press is located at the joint of the rear leg to squeeze the

Head - contains brain, eyes, antennae, mouth etc..

Wing - 2 pairs, one in front one in rear of thorax



Eye - bees see only 6 colors and one of them is ultraviolet. Their eyes are compound, meaning they have lots of lenses to see through.

Stinger - ouch...I think we know what this is...the pointy end is barbed to make it impossible for the bee to remove it from the victim without losing some of its internal organs. The stinger is attached to a poison sac that is removed from the bees body when it tries to fly away. Then the bee dies. The stinger is pulled back inside the bees body when not in use.

Parts of A Bee

Proboscis - mouth assembly- mandible and tongue

Spiracles - tiny holes in the side of the bees body. They breathe through these holes.